

Ground Driven Spreader

PTS-100 / PTS-160



Assembly Instructions

1. Begin assembly by sliding the threaded bushing (#7) through the bottom center hole of the hopper. Fasten the mobile shutter (#47) to it with the nut (#47). Make sure the slots in the mobile shutter are facing away from the bottom of the hopper. Tighten the nut securely.
2. Bolt the guard (#14) to the frame (#11) with the 8 x 16mm (#16) bolts, washers and hex nuts.
3. Slide the Spinner disc (#46) and the hopper with mobile shutter attached, over the gearbox shaft. Secure the spinner disc in place with the R pin (#43) and secure the rear of the hopper to the square tubing section of the frame (#11) using the 8 x 40 carriage bolts (#8), 8mm washer (#9) and hex nut.
4. Secure the agitator (#4) to the output shaft using the 6 x 30mm (#5) bolt and lock nut.
5. Place the distributor shield (#3) inside the hopper (#2) and fasten with the two M8x20 carriage bolts (#50), M8 washers (#9) and M8 hex nuts (#10) that connect the sides of the frame to the hopper.
6. Slide the flow control assembly (#19) into the slot of the mobile shutter (#48) and fasten to the guard (#14) with the adjustment knob (#20) and M8 washer (#14).
7. The wheel hubs are offset and are mounted on the shaft (#28) with the long end (that with the hole) to the inside. Slide one of the wheels over the left side, a washer (#31) and secure it in place with the "R" clip pin (#45). Slide on the right wheel, and then hold it in place with the bolt (#26) sliding through the hole in the hub and the hole in the shaft. Secure it in place with the nut (#6). Place the washer (#31) and the "R" clip (#45) on the outside of the right wheel.
8. Attach the drawbar tongue (#51) to the square tubing of the frame utilizing the right plate (#17) and left plate (#18) and the 8 x 40mm bolts (#15), washers and nuts. Select the hole in plate (#17) that allows the spreader to run parallel to the ground. The correct hole will depend on the hitch height of the towing unit. Attach plates (#21 & #22) by sliding the round stock ends of these two plates through the tubes that are welded to the ends of the tongue. Bolt the outer end to the frame (the two plates should be angled upwards with the stock ends pointed inwards after they are bolted).

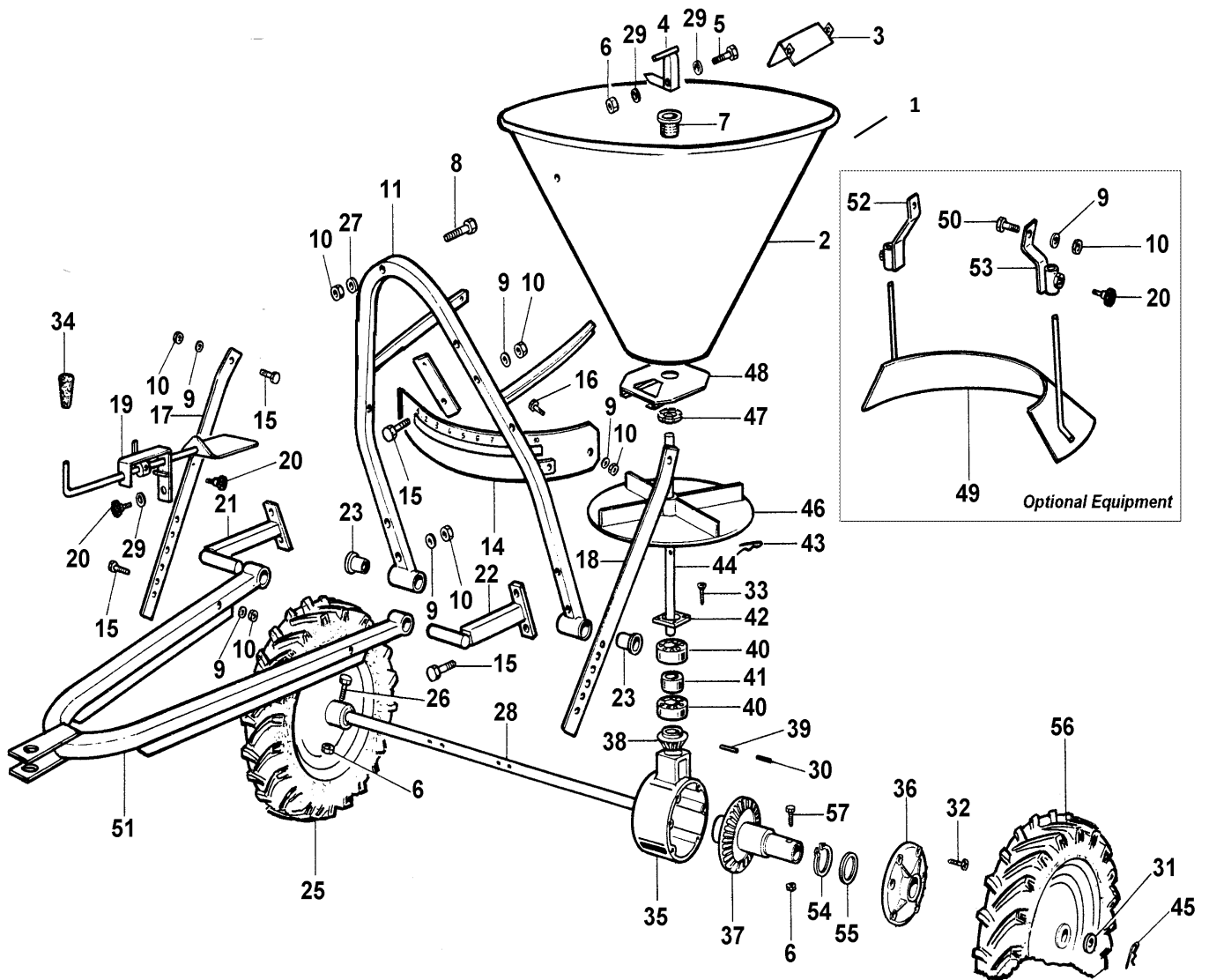
Belco Resources Equipment

PTS-100 / PTS-160

| POS. | Part # | Description | Qty |
|------|-------------------|------------------------------------|-----|
| 1 | RP02-100-02-00 | Hopper PTS-100 | - |
| 2 | RP02-150-02-00 | Hopper PTS-160 | - |
| 3 | RP02-000-03-00 | Guard - Agitator | 1 |
| 4 | RP02-000-04-00 | Agitator | 1 |
| 5 | BM061030 | Bolt- M6 x 1.0 x 30 | 1 |
| 6 | LNM061 | Self-locking Nut- M6 x 1.0 | 3 |
| 7 | RP02-000-07-00 | Threaded Bushing | 1 |
| 8 | CBM0812540 | Carriage Head Bolt- M8 x 1.25 x 40 | 1 |
| 9 | FW08 | Flat Washer- M8 | 12 |
| 10 | NM08125 | Nut- M8 x 1.25 | 13 |
| 11 | RP02-000-11-00 | Frame PTS-100 | - |
| | RP02-000-11-15 | Frame PTS-160 | - |
| 14 | PTS-001 | Deflector | 1 |
| 15 | BM0812540 | Bolt- M8 x 1.25 x 40 | 8 |
| 16 | BM0812516 | Bolt- M8 x 1.25 x 16 | 2 |
| 17 | RP02-000-17-00 | Tow Bar Adjustment - Left | 1 |
| 18 | RP02-000-18-00 | Tow Bar Adjustment - Right | 1 |
| 19 | RP02-000-19-00 | Shutter Adjustment | 2 |
| 20 | RP02-000-20-00 | Knob - Adjustment | 1 |
| 21 | RP02-000-21-00 | Tow Bar - Connector - Left | 1 |
| 22 | RP02-000-22-00 | Tow Bar - Connector - Right | 1 |
| 23 | RP02-000-23-00 | Bushing—Frame | 2 |
| 25 | RP02-135-006-2556 | 13 X 6.5 High Floatation Tire—Left | 1 |
| | RP02-2556-1343 | Wheel Bushing | 4 |
| 26 | BM061050 | Bolt- M6 x 1.0 x 50 | 1 |
| 27 | FW08 | Flat Washer- M8 | 1 |
| 28 | RP02-000-28-01 | Axle- PTS-100 | 1 |
| | RP02-961-28-00 | Axle- PTS-160 | 1 |
| 29 | FW06 | Flat Washer- M6 | 3 |
| 30 | RP3x20 | Roll Pin- M3 x 20 | 1 |
| 31 | RP000.31.00 | Flat Washer- M20 x 40 | 2 |
| 32 | RP02-016-32-01 | Bolt - Self threading 3.9 x 22 | 6 |
| 33 | RP02-016-33-01 | Bolt - Self threading 3.9 x 16 | 4 |
| 34 | RP02-000-34-00 | Knob - Shutter Regulation | 1 |
| 35 | RP02-016-35-01 | Housing | 1 |
| 36 | RP02-016-36-01 | Cover - Housing | 1 |
| 37 | RP02-016-37-01 | Ring Gear | 1 |
| 38 | RP02-016-38-00 | Pinion Gear | 1 |
| 39 | RP5x20 | Roll Pin- M5 x 20 | 1 |
| 40 | B6202 | Bearing- 6202 | 2 |

Belco Resources Equipment

PTS-100 / PTS-160



Belco Resources Equipment

PTS-100 / PTS-160

| POS. | Part # | Description | Qty |
|------|-------------------|------------------------------------|-----|
| 41 | RP02-016-41-00 | Spacer | 1 |
| 42 | RP02-016-42-01 | Cover - Housing Hub | 1 |
| 43 | RC5 | R-Clip- M5 | 1 |
| 44 | RP02-016-44-01 | Shaft - Output | 1 |
| 45 | RP06-000-06-00 | Angled Head R-Shaped Clip- M4 | 1 |
| 46 | RP02-000-46-01 | Spreader Disc | 1 |
| 47 | NM3035 | Nut- M30 x 3.5 | 1 |
| 48 | RP02-000-48-00 | Shutter | 1 |
| 49 | PTS-001 | Deflector - Directional (Optional) | 1 |
| 50 | BM0812525 | Bolt- M8 x 1.25 x 25 | 2 |
| 51 | RP02-000-51-00 | Tow Bar | 1 |
| 52 | RP02-000-52-00 | Connector - Def. Dir. Right | 1 |
| 53 | RP02-000-53-00 | Connector - Def. Dir. Left | 1 |
| 54 | SRE-30 | Snap Ring- External- M30 | 1 |
| 55 | RP02-016-55-01 | Shim- M30 x .05 | 1 |
| 56 | RP02-135-006-2556 | 13 X 6.5 High Floatation Tire—Left | 1 |
| 57 | BM061040 | Bolt- M6 x 1.0 x 40 | 1 |
| | RP02-016-71.01 | Gearbox Complete | 1 |

Operation

The PTS series is ideal for lawns, parks, nurseries, athletic fields, parking lots, etc. It is designed for small tractors or ATVs. It may also be used as a salt spreader for snow or ice covered roads during winter months. The PTS Spreader can be used to distribute granular fertilizers, seeds, sand and small granular salt.

The anti-corrosive rotating spreader disc is ground driven by the air tires which are attached to a drive axle that runs through a sealed gearbox with tempered high carbon steel gears.

.

Operation

The quantity of material distributed per acre depends on the following factors:

1. Spreader ground speed.
2. Unit weight and size of the material to be spread.
3. Spreading width.
4. Lever position that regulates opening size.

The working speed depends on ground conditions.

To regulate the spread pattern slide (to the left or right) the lever (see #19), which is located under the hopper and runs through the slot in the disc shielding (see #14). This moves the spread pattern from 180° at position 0 (in the center), to either mostly 90° right with the lever shifted all the way to the left or mostly 90° left when shifted to the right completely.

To regulate the amount of material to be spread, using the same lever as above (#19,), slide it in and out to regulate the size of opening at the bottom of the hopper. Use the scale located near the lever to gauge the size opening needed. Example: if it is determined that the appropriate opening desired is position #6, loosen the knob (see #20,) so the blocking plate will slide. Push the lever in until the hole is completely closed and move the blocking plate to position #6 and tighten the knob. To spread, pull the lever back until it stops in position #6.

To adjust the spreading width, ground speed is the most important factor, the faster the ground speed the further the material is thrown. An optional rear deflector (see #49) is available for additional regulation. Move the deflector up and down to change the spreading distance. The higher the deflector is up the further the spread width, the lower the deflector, the less distance the material travels. An optional metal skirting is available to regulate swath spread

Swath Spreading Patterns (lb/1000 sq.ft)

| | | Spreading width 6.5 feet | | Spreading width 13 feet | |
|----------------|------|--------------------------|------|-------------------------|--|
| Lever Position | 2mph | 4mph | 2mph | 4mph | |
| 1 | 6 | 4 | 3 | 2 | |
| 2 | 12 | 6 | 6 | 3 | |
| 3 | 19.5 | 10 | 10 | 5 | |
| 4 | 28 | 14 | 14 | 7 | |
| 5 | 37 | 18 | 19 | 9 | |
| 6 | 46.5 | 23 | 23 | 11.5 | |
| 7 | 56 | 28 | 28 | 14 | |
| 8 | 65.5 | 33 | 33 | 16.5 | |
| 9 | 77 | 39 | 38.5 | 19.5 | |
| 10 | - | 44 | - | 22 | |



Increasing agricultural productivity since 1974

P.O. Box 8164

Rocky Mount, NC 27804

www.BR-Equipment.com



Tel: 252-442-0700

Fax: 252-442-0787

Sales@BRGlimited